

GT Design Door Kick Panel Installation



CONTENTS

- [1] 3M K500 (Primer)
- [2] 3M PAC300 (Cleaner)
- [3] Masking tape (0.24inch×0.7inch)
- [4] Instruction 12
- [5] gloves

CAUTION

Apply primer only to the back side mounting area of the kick panel. **Do not use the primer directly on the door panel.** Use masking tape on the door panel to prevent the primer from dripping from the mounting area.

INSTALLATION



- 1** Please use the included 3M PAC300 cleaner to remove all dirt and debris from the door panel.



- 2** Line up and place the kick panel on to the door mounting area. Adjust the alignment if necessary.



- 3** Use the masking tape to outline the kick panel on the door mounting area.



- 4** Lightly apply the 3M K500 primer on to the adhesive side of the kick panel. Firmly attach the kick panel into place.

CAUTION FOR THE APPLICATION

- Do not apply too much primer.
- Be careful not to drip the coating.
- The 3M K500 dries fast so applying the coating will need to be done quickly.

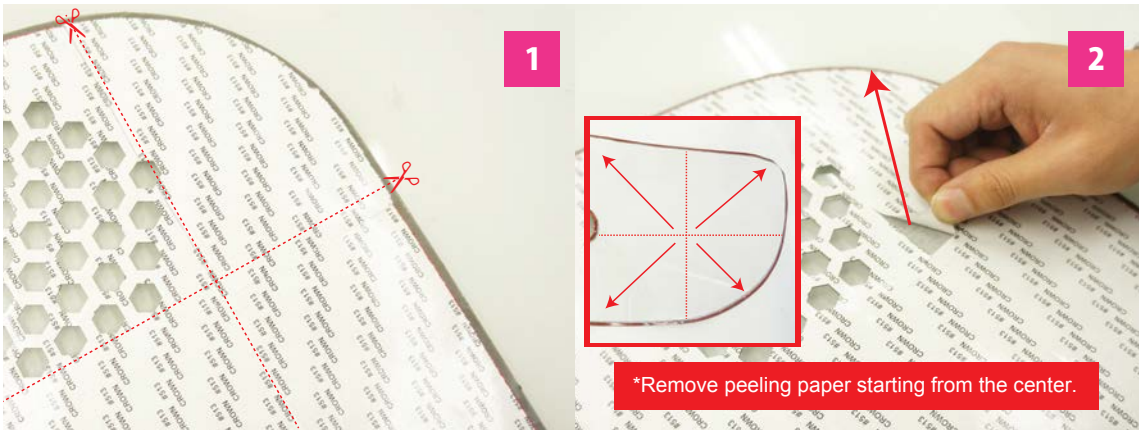
Be sure to only use 3M K500. Carefully apply the coating, especially at the edges and stitching.



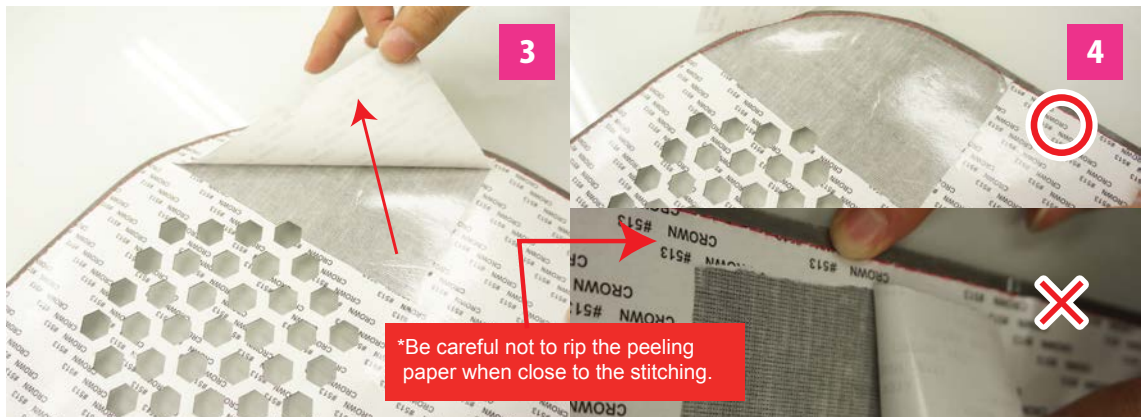
REVEL

www.Revel-USA.com

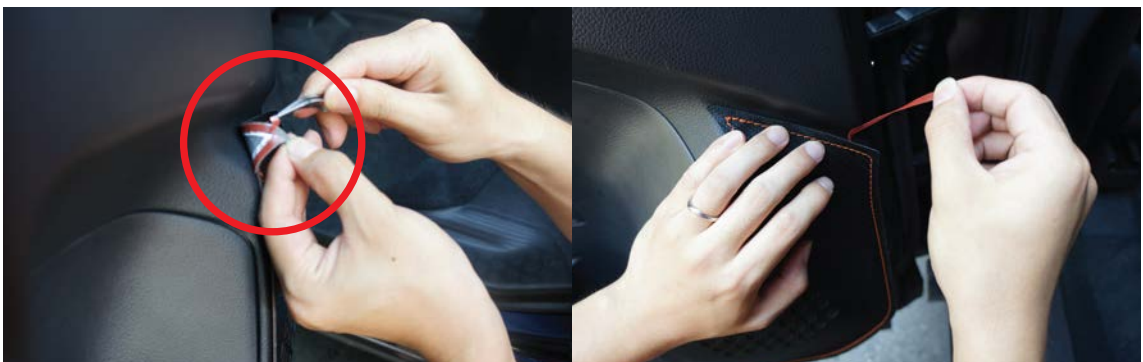
Instruction for GT Design Door Kick Panel



The peeling paper is divided into several parts in advance so that it is easy to work with.



Pull slowly from the center to the outside edge so that all of the peeling paper is removed.



After placing the kick panel on to door, carefully peel and pull away the outer double-sided tape.